

PROJECT NEWSLETTER

OCTOBER 2025

Neoen is investigating the potential to develop a wind farm in the State managed softwood plantations, approximately 20-kms east of Tumut. The Buccleuch State Forest plantations are suitable for a potential wind farm because they have a strong wind resource, three existing transmission lines, and a large network of existing roads.

Software Communication Issues



Recently it was brought to Neoen's attention that communications have not been getting through. We have had some issues with our software provider, and we offer our sincere apologies for this inconvenience.

We believe the software is working now.

Please check your junk or spam folders just in case and whitelist our communications so you don't miss any further important project updates.

Save the Date

Community Drop-In Session - Wednesday, December 3rd

DECEMBER 2025

Sun	Mon	Tue	Wed	Thu	Fri	Sat
		1	2	3	4	5
6	7	8	9	10	11	12
13	14	15	16	17	18	19
20	21	22	23	24	25	26
27	28	29	30	31	Christmas	

We will be holding a Community Drop-In Session on December 3rd.
More details to come soon.



Meteorological Masts

Five meteorological masts were proposed for Bondo Wind Farm. Three of these have now been constructed, with the final two to be completed before December 2025. They are located at key points around the project area. These masts will measure wind speeds, & will collect bird and bat data at height across the project area. Forestry Corporation is also looking at attaching fire-detection cameras for bushfire surveillance.

Ecological Studies

Neoen has been conducting many surveys to better understand potential ecological impact of the project. The project is being designed to minimise disturbance on sensitive ecological areas (looking at location of turbines, minimum tip height, roads, ancillary infrastructure, etc). Since most of the project is located in pine plantation, there will be very low direct impact to native vegetation. Neoen has been collecting ecological data since May 2024 and is required to collect 2 years of this data prior to submitting the Environmental Impact Statement (EIS).

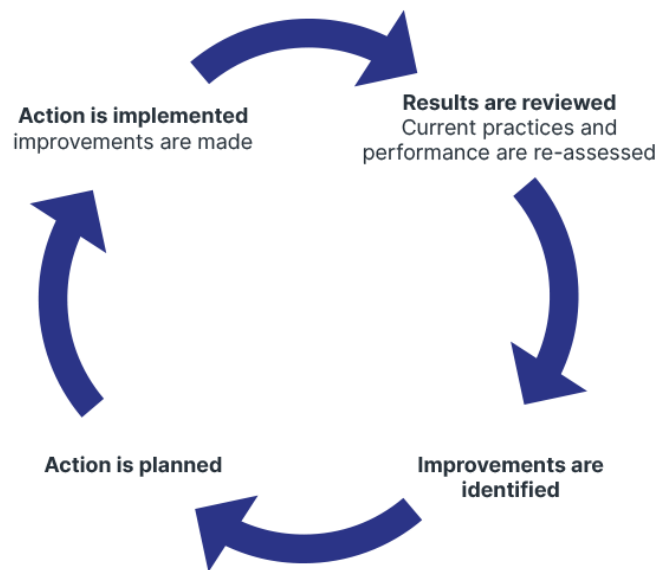
Prior to construction, Neoen will prepare a Bird and Bat Adaptive Management Plan and a Biodiversity Management Plan that will outline the strict protocols that must be followed during construction such as avoiding environmentally sensitive areas. The Bird and Bat Adaptive Management Plan would cover the operational phase, mitigating any impact the project could have on different species.

We use the following strategy:

Avoid the impact where possible.

Mitigate the impact as much as possible when it's not possible to avoid it completely.

Compensate when it is not possible to mitigate impact completely. For example, biodiversity credit. An example of this is Worlds End Gorge in South Australia, [Environment - Goyder Renewables Zone](#)



Project Lifecycle

Please see the project timeline graphic.

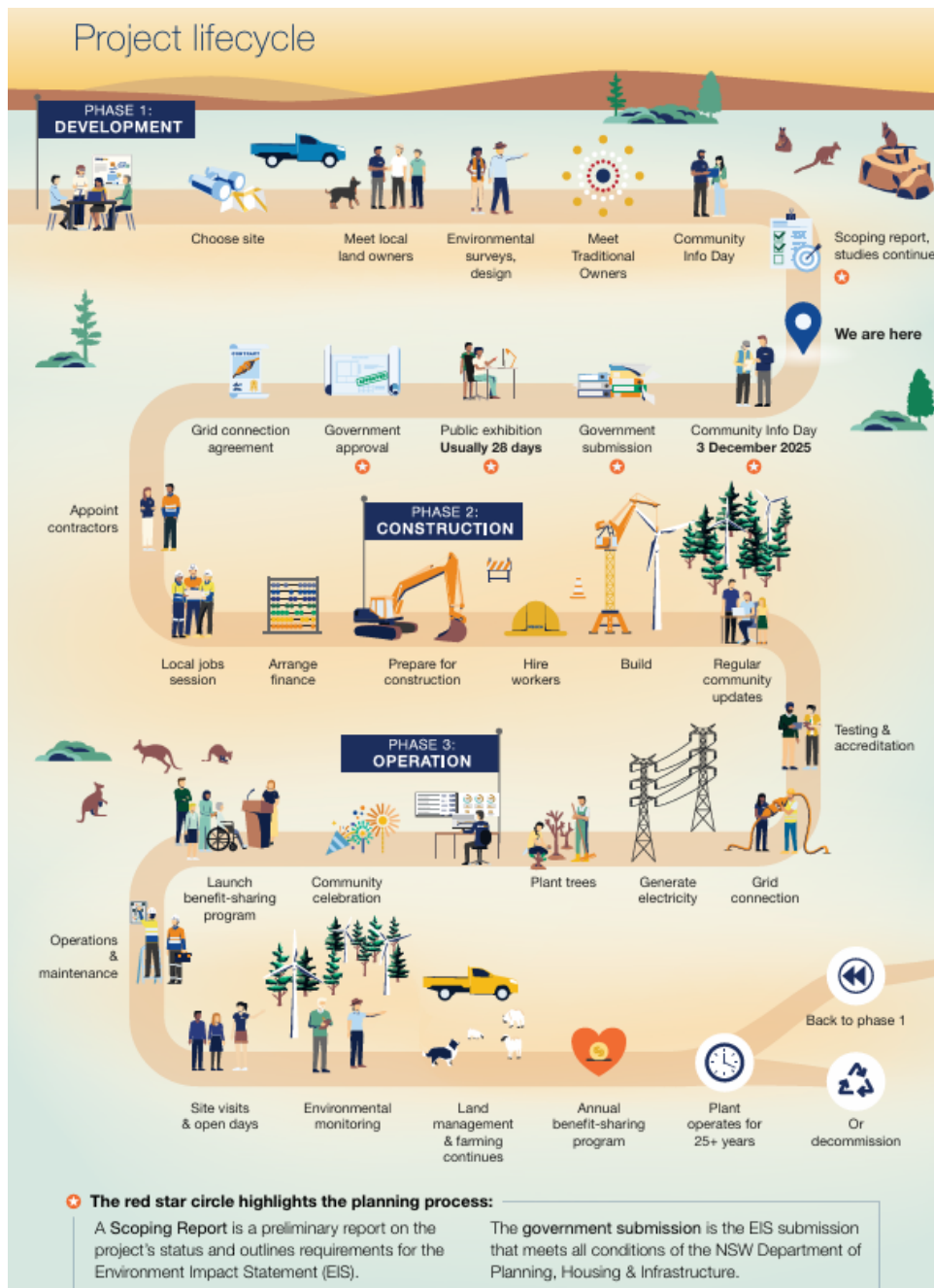
You can see where we are at this point in time in the Development Phase, just after the Scoping report has been submitted.

We will have a Community Drop-in session on December 3rd (details to come).

When the 2 years of studies are completed the Environmental Impact Statement (EIS) will be submitted to the Department of Planning, Housing & Infrastructure (DPHI). Please note that the final turbine layout and locations will be dependant upon the outcomes of these studies.

The EIS will then be placed on Public exhibition.
DPHI allows 28 days for public submissions at this time.

Please let us know if you have any questions or wish to discuss anything further. (contact@bondowindfarm.com.au or free-call [1800 966 106](tel:1800966106))



Visual Assessments

Visual Assessments are ongoing and we hope to have them finalised by the end of the year.

Photomontages should be available for viewing by December 2025.

In addition, Neoen now has an iPad with TrueView software. This is a visual aid indicating what the project might look like from key points around the project area.

Please call to make an appointment if you'd like to have a look. If your property is not on Google Street-View then we will need to arrange a site visit for the software to work.

Email contact@bondowindfarm.com.au or free-call [1800 966 106](tel:1800966106).



For more information, please contact:

Teresa Baker



contact@bondowindfarm.com.au



[1800 966 106](tel:1800966106)



[Visit Website](#)



[Neoen AU](#)